



heaven, and sitteth on the right hand of God the Father Almighty; from thence he shall come to judge the quick and the dead. I believe in the Holy Ghost; the holy catholic church; the communion of saints; the forgiveness of sins; the resurrection of the body; and the life everlasting. Amen.

**Introduction to the Offering**

**Offertory**                      “To God Be The Glory”                      OLD 100<sup>th</sup>

**\*Doxology #95**

**Praise God, from whom all blessings flow;  
Praise Him, all creatures here below;  
Praise Him above, ye heavenly host;  
Praise Father, Son and Holy Ghost**

**\*Prayer of Dedication**

**Prayers of the People and the Lord’s Prayer**

**THE SENDING FORTH**

**\*Hymn of Dedication # 698**                      “God of the Ages”                      NATIONAL HYMN

**\*Charge**

**\*Benediction#143**                      “On Eagle’s Wings”                      G. NEUMARK

**\*Congregational Response #**

**\*Postlude**                      “Battle Hymn”                      AMERICAN MELODY

*\* All who are able, please stand*

*Kingston United Methodist Church*

and

*Bethel Presbyterian Church*

~ two communities of faith coming together,  
for fellowship, study and service . . .  
seeking God’s peace, justice and love ~



TO OUR GUESTS, we extend a warm welcome from Kingston United Methodist and Bethel Presbyterian Churches. We have covenanted together for 2008 to share in worship, fellowship, study and service. We invite you to participate in signing the Friendship Folders (Green for Methodist – Blue for Presbyterian), adding your address and phone number and please note if you would like to receive a church newsletter or a pastoral call. When we pray the Lord’s Prayer, we say “sins...sin against us” rather than “debts...” or “trespass on the cards provided in the pew racks, please put those in th will be notified of your request. A team of Pastors will be worship (in the front chancel area). We are glad you are witl

*Kingston United Methodist Church*  
*Church*  
*Rev. Donald Morris-Pastor*  
*Rev. Sue Lynn Johnson-Congregational Care*  
*Associate*  
*Regina Little - Program Director*



*Music Ministry- Wayne Duggin*  
*Ministry*  
*Worship Leader - Kingston UMC*  
*Ministry*

*Laura Walker- Music*

*Marilyn Giffin- Music*



### Week of May 25 – June 1

Today 8:30 Early Worship  
 9:30 Sunday School  
 10:30 Worship Service

Monday **Memorial Day – Church Office Closed**

NO Seniorize  
 NO Spanish Class  
 NO Boy Scout Troop 101

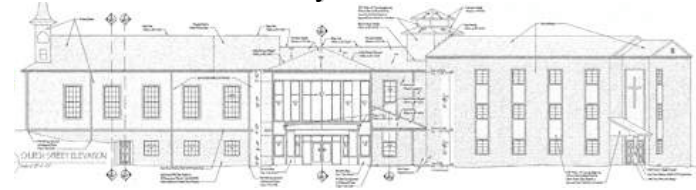
Wednesday 9:00 Seniorize  
 5:30 Bell Choir Practice  
 6:00 Organizational Meeting  
 for move of sanctuary  
 7:00 Spanish Class @ KUMC  
 7:00 Choir Rehearsal

Friday 9:00 Seniorize  
 9:30 Book Group @ Library

Sunday 9:30 Sunday School  
 10:30 Worship Service  
**Only ONE Service on June 1**

# Bethel Presbyterian Church

May 25, 2008



**Open Door Deadline Monday, May 26, 2008  
 @12:00 Noon**

*On The Move Again:* The historical sanctuary of Bethel will be moved (if all goes as planned) starting on *June 16, 2008*. The entire process should take about two weeks with the moving complete during the fourth week of June. We will need help organizing and staffing an information booth. There will be an organizational meeting on *Wednesday, May 28 at 6:00 P.M.* in the church office. **Please come!**

### Camp John Knox

#### 3 Male Counselor Positions Available

There are three last minute positions available at Camp John Knox this summer. We are looking for three MALE counselors. These guys must be 18 years old, enthusiastic, enjoy working outdoors, and Christian. The positions run from May 27-August 2 with the pay of \$165 per week. Staff Training begins May 27, so please call the John Knox Center office ASAP with their contact information. It is very important we fill these positions by next Tuesday, so please do not delay.

### *CSM: Share the Experience!*

#### **We're headed to Nashville!**

A group from our church will depart July 13, 2008 for a short-term mission trip with the CSM [Center for Student Missions]. We will be serving in the urban center until July 18. To learn more about our trip, please talk to Marc Sherrod or Denise Martin or log onto CMS's website [www.csm.org].

We are excited to share our experience with you!

**Tuesday, June 10, 2008 at 1:00 PM**– Phil and Jane Walsh will be hosting the “Fun Lunch” (dessert and fruit). As a special treat, Jane will present slides from their trip to Europe (Holland, Germany, Austria). We will meet at the church at 12:45 PM for carpooling.



**2008 Vacation Bible School – June 9-12**

KUMC and Bethel invite all children to ride the wave of God’s love at their summer Beach Party. Surfin’ Through the Scriptures – Beach-Be-Attitudes, June 9-12.

Call Angie Layne 717.0592 or Karen Schall at 423.369.2955 for more info.

**Can you help??**

We need assistants, craft leaders, folks to help with meals and “lifeguards” to help kids get from class to class.

We also need some supplies from your recycle pile: empty toilet and paper towel tubes, small seashells, and assorted beach props. If you can help, contact Marilyn Harris at 539.4779 or Karen Schall at 423.369.2955.

\*There is a collection box in the narthex

---

ADULT CPR will be offered for Bethel and KUMC parishioners and their friends on June 1<sup>st</sup>. The class will be held at the fellowship hall at Kingston United Methodist from 2- 5 P.M. The cost will be \$20.00 per person. Usual price for CPR classes are \$40.00 but we are charging for the book only. This training is offered through the American Red Cross.

Instructors are Rick Ross and Deb Hyder, Parish Nurse. *Please preregister for the class, so we can have enough manikins.* If you have any questions or to preregister, please call Deb Hyder Tuesday-Thursday at Bethel’s office: 376-6340.

---

**June 2008  
Bethel on the Move [(again) !**

**Prayer Concerns**

If you have a **Prayer Request**, fill out a Prayer Card and place it in the offering plate. If you have a concern you want mentioned in Worship, please contact one of the pastors or see them before the worship service. You may also place a Prayer Card (by 10:15) in the **Prayer Request Box** on Bethel’s table in the Narthex.

**Hospital**

Glenda True Everett.....Methodist Medical CCU

**Assisted Living and Nursing Homes**

- Jamestown 851 Lawnville Road, Kingston 37763
  - Nelle Griffith.....Room 206
  - Louise Pickel.....Room 209
  - Mac Robbins.....Room 305
  - Anne Smith.....Room 313
- Wellington Place 1098 Bradford Way, Kingston 37763
  - Joan Pemberton.....Room 306B
  - Jan Parker.....Room 107
- Baptist Healthcare 700 Williams Ferry Rd 45 Lenior City 37771
  - Evelyn Waldrup.....Room 42A
- Rockwood Healthcare 5580 Roane State Hwy Harriman 37748
  - Roberta Cash.....Room 132B
  - Margaret True.....Room 212B
  - Gene Pierce.....Room 114
- Harriman Healthcare 240 Hannah Rd Harriman 37748
  - Ruby Hunter.....Room 305A
  - Shirley Lumpkins.....Room 602
  - Tom Roostee.....Room 509A
- NHC Oakridge 300 Laboratory Rd Oak Ridge 37830
  - Wanda Carter.....Room 212

Doris Barber, Dot and Al Davis, Anne Robertson,  
Marnie Shields, Edith Miles, Nelda Toon, Henry &  
Carolyn Tulley, Lucy Webb, Helen Roosteeat *Kenneth's*  
*home in GA.*