

# The Open Door

BETHEL PRESBYTERIAN CHURCH / MARCH 2012

## Bethel Presbyterian Church

203 S. Kentucky Street  
Kingston, TN 37763

### To contact us:

Phone: (865) 376-6340

Fax: (865) 376-6390

Email:

1bethel@bellsouth.net

On the web:

www.bethelpcusa.org

Office Hours: 9-3:00 M-F

### Sunday Schedule:

9:30 a.m. Sunday School  
for all ages

10:30 a.m. Fellowship/  
Coffee

11:00 a.m. Worship

6:00 p.m. Youth

Sacrament of Holy

Communion is celebrated

On the first Sunday of each  
month.

Bethel  
Presbyterian  
Church ~ a  
community

*of faith coming together,  
for fellowship, study and  
service...seeking God's  
peace, justice and love ~*



### Dear Friends,

At our Ash Wednesday Service, Sue Lynn read Isaiah 58. A friend of mine had also posted the same on facebook that morning. I hope you will open your Bible and read the chapter for yourself. God in this chapter is railing at God's people for the ways they have forgotten the covenant, the ways they have turned from God and made a mockery of their religion. God reminds them that the fast God chooses is "to loose the bonds of injustice, to undo the thongs of the yoke, to let the oppressed go free, and to break every yoke." And when we as God's people do those things, when we feed the hungry, clothe the naked, care for the homeless, we will be in right relationship to God and one another.

But it is 58:9b-10 that really strikes me. "If you remove the yoke from among you, the pointing of the finger, the speaking of evil, if you offer food to the hungry and satisfy the needs of the afflicted, then your light shall rise in the darkness and your gloom be like the noonday." If we stop pointing the finger, stop speaking of evil, if we feed the hungry and satisfy the needs of the afflicted, then our light shall rise in the darkness and our gloom be like the noonday." If we stop laying blame and pointing to who is and who is not a "real" Christian and if we take care of those in need, this pall that hangs over us will be gone. If we stop fighting and get about the business of Christ, the light will shine and the darkness will vanish.

Yet this is the opposite of what I have heard and seen from Christians of all stripes lately. We seem stuck in the mode of fighting with one another. We seem to have gotten bogged down in the ways of the world and forgotten God's way – a more perfect way and a more difficult way. We have gotten stuck in the PCUSA as well as in the larger landscape of our country.

Isaiah and Matthew (in the Sermon on the Mount that begins with chapter 5) both call for kindness and mercy to mark our discourse with one another. We are called as Christians to speak the truth in love – not in hate. We are called to talk with one another, not to exclude each other. We are called to love one another even when we don't agree. Being a Christian cannot be limited to a few doctrines or beliefs. Being a Christian is about a way of life that includes how we care for others and how we treat those who believe and do differently us. Being a Christian is about following Jesus the Christ who shared God's love with everyone!

During this season of Lent, may we seek justice, love mercy and walk humbly with our God. May we no longer point the finger or speak evil. May we share our bread with the hungry and satisfy the needs of the afflicted. And may we do all of this in the name of Jesus, our brother and our savior.

Grace and peace, Wendy

## Serve Team

Sunset Gap Thrift Store trip: Have you started your Spring Cleaning? On Thursday, March 22, we'll be taking good usable clothing and household items to the Thrift Store in Cosby TN. (No large furniture, please.) Things can be stored at the church in the closet beneath the stairs, or you can call Joni Morgan at 617-4353 to arrange for pickup. Drivers are always needed. We start loading at 8 am; after we deliver to Sunset Gap we have the option of lunch at a nice restaurant nearby, or you can swing through Pigeon Forge/Gatlinburg to shop on your way home. With the group lunch we are usually back in the Knoxville area by 2 pm. If you can drive, please let Joni know.

## Family and Fellowship

The Family and Fellowship Team will have its monthly meeting at 5:30 on March 21, prior to the Fellowship Supper. Come meet with the Team at 5:30 and enjoy the planning of upcoming Bethel fellowship events. New recipes and ideas for fun and food are especially welcome! If your present commitments only permit time for supper, come later and bring family and friends to share a meal and conversation. We hope to see you at the Lenten pot-luck meal which begins at 6:30 P.M. on March 21.

The F & F Team will provide coffee and tea to accompany the "Brown Bag" suppers that you may choose to bring, each Wednesday evening of the Lenten Study Series, beginning Wed. February 29.

## Property Committee

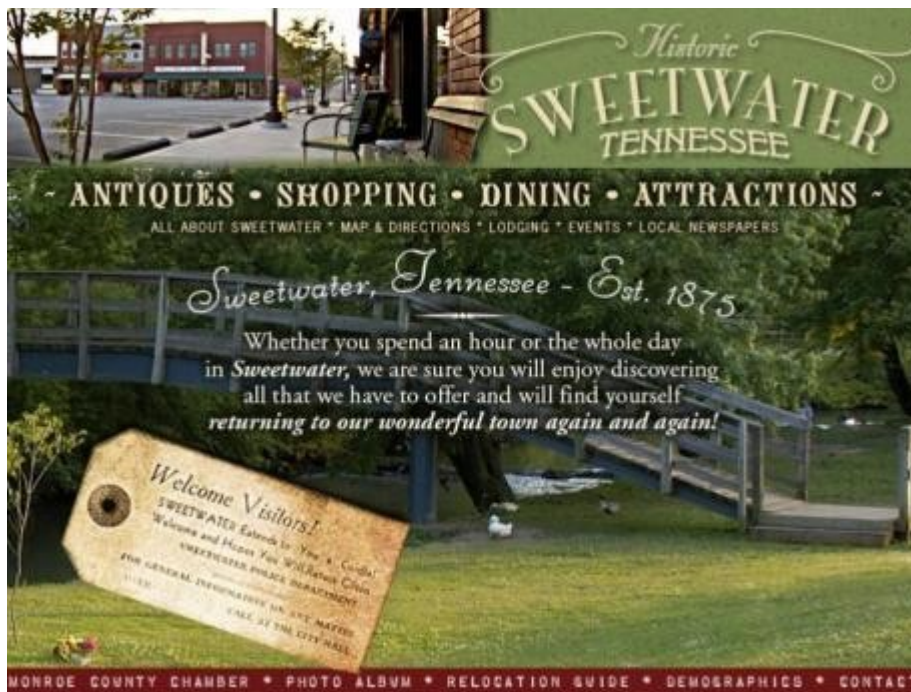
Many thanks to all those who turned out for our church clean-up day. We covered a lot ground (actually pews, pew cushions and carpeting) in the sanctuary. The kitchen has been spruced up and the resource room tidied up. The hidden effort was Gary LeMaster's effort in one of the utility closets adding a direct connection to the drain system from the overflow(?) valve. Hopefully Gary's efforts will not be required but his effort could save us from potential flooding in the office wing. A lot of "picky" little items were also taken care of during our cleanup.

We will keep you posted on our up-coming spring (into action) outdoor clean up and planting session coming in March/April.

**Ladies Day Out** is planning to go to historic Old Downtown Sweetwater on **Saturday, March 3rd**. We will meet at Bethel at 9:30 A.M. and will carpool from there. There is a signup sheet on the kiosk in the Gathering Area at Bethel. Looking forward to seeing you all.!

## Lenten Challenge:

Wendy challenged us not just to give up something for Lent, but to take on something. What better way to do both than to give up less than satisfactory health habits and take on some good ones. It's active stewardship of the bodies God gave us as well as achieving the benefits that healthy eating and exercise will give us. Group exercise classes are a good place to start. Some medical insurances pay for gym memberships to participate in classes and use of the gym facility on a regular basis. If you have questions, see Nancy King who teaches the Silver Sneakers program at Foust Fitness in Kingston. Need information on Silver Sneakers? Go to [www.silversneakers.com](http://www.silversneakers.com) for information and local class locations.



## Faith Team

### What is a Faith Team?

Here at Bethel this team is comprised of two (formerly three) aspects: Worship and Evangelism. This team used to encompass Stewardship, but session voted at its last meeting to make Stewardship a team all its own. Faith team members include Laura Walker, Chris Badger, Mary Hook, Amy Coen, Alfred Rybka, Liz Singley, Marilyn Gaffin, Helen Stevenson, Celia Simon and Nancy King, chair. Pastor Wendy Neff attends the meetings as well. Meetings are currently held on the first Sunday of each month after worship.

### What do we do?

In the area of worship, this committee assists the pastor in all things worship. Music, bells, anthems, special services such as sunrise service and Christmas Eve, youth services, communion

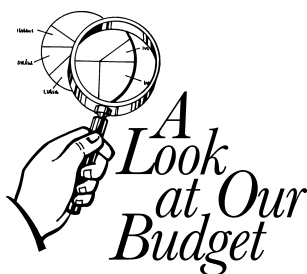
services, liturgists, ushers, special offerings, minutes for mission, and just about everything else from candles to communion cups come under the management of this committee. One individual who deserves recognition for her work in worship is Peggy Sheppard. She has prepared the communion elements, set up the communion table, and cleaned up the glassware and silver for the past 12 years. There have been others such as Helen Stevenson who provided help. Thanks to Peggy and all who have assisted in this.

The area of evangelism has been the "E" word around us Presbyterians. When the church remodeling was underway, Bobbie Martin worked with PET on beginning an evangelism program of greeting and meeting. We are continuing her beginning work by using the PCUSA definition of evangelism: "Expanding

the community of God through sharing our faith". A new communications team will seek ways to incorporate internet and social networking as a point of contact and entry into the church. Interested in computers and networking? This may be just for you – we need your input and expertise!

The Faith Team has one section of the kiosk in the gathering area. If you have a creative side needing an outlet and would like to work with the team on updating information on the kiosk as well as making it look better, let us know. The kiosk needs your help.

Faith Team is looking for you. If you can't or just do not want to make every meeting, that's OK. We would love to have you as part of this team. Contact any of the members above for information. Thanks!



### General Fund – January 2012

Offering Received	\$27,632
Investment Income	96
Other Income	
KUMC Shared Youth Program	1,553
Building Use Income	600
Total Income	\$29,881
Less Expenses	19,353
Net Increase (Decrease)	<u>\$10,528</u>

### Mortgage Fund – January 2012

Offering Received	\$ 4,985
Less Mortgage Payments	8,361
Net Shortage	<u>\$(3,376)</u>

### Mortgage Balances

	12/31/11	1/31/12	Principal Reduction
PILP \$	885,691	\$ 882,877	\$ 2,814
PET	91,439	91,127	312
Private	68,897	68,063	834
	<u>\$1,046,027</u>	<u>\$1,042,067</u>	<u>\$ 3,960</u>

## Suggestion

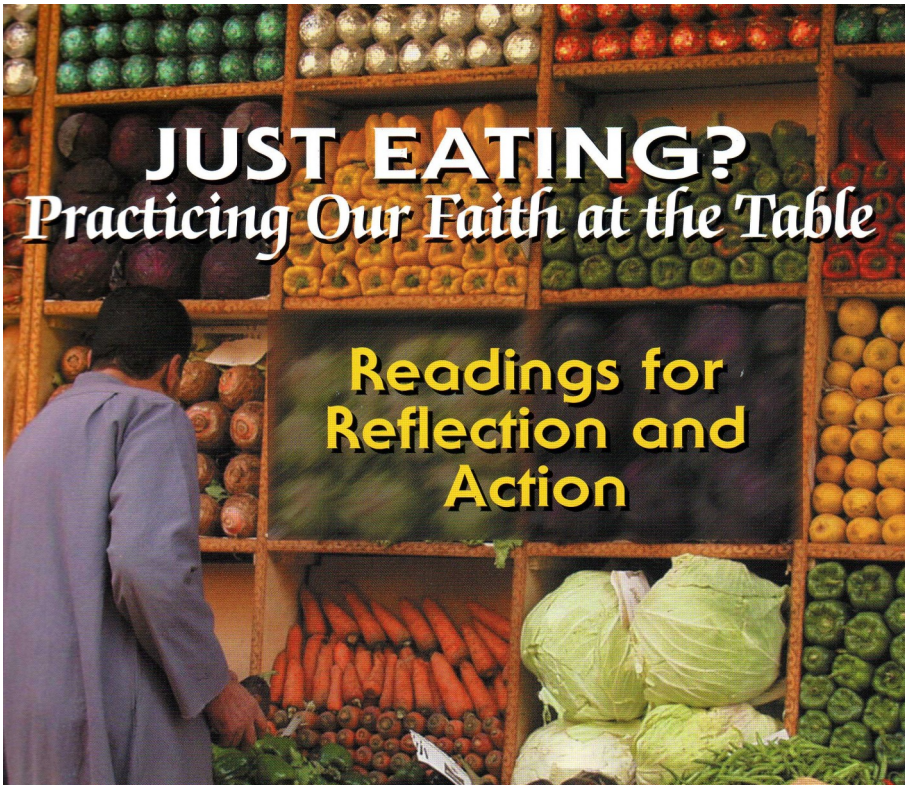
### Received -

Maybe have both a Spring and a Fall Festival. Make the Spring one so more kids would feel welcome, like kids' games and food. If you get the kids to like it at Bethel, the parents will come. Fall Festival - just keep it the same.



Response from Festival Coordinator - much of the festival money comes from donations from crafters, local companies, etc. and asking them to donate more would be asking too much. I think we should continue the yearly event and, perhaps in 5 years, consider the possibility of expanding it to spring and fall.





## LENTEN SERIES

Please join us each Wednesday Evening at 6:00 during Lent (except March 21st) for a Brown-Bag Supper and Discussion. Drinks will be provided. Please let the office know if you need child care.

Guidebooks are available for \$3, but are not required for participation. Please call the church office 376-6340 if you'd like a book, or need more information.

### Wish List for Travelers Bags

The Ignite/Fusion Kingston Student Ministry and Transitions Fellowship Young Adult ministry have distributed over one hundred bags to our community over the past year. The bags are distributed to people passing through our community who have fallen on hard times and to children whose parents are in the Roane County Detention Center.

#### Adult bags

Cereal bars  
Bottled Water  
Crackers  
Beanie Weenies or Vienna Sausages (with a pop top)  
Plastic ware to eat canned goods  
Fruit cups

#### Kids Bags

Fruit Roll ups or fruit snacks  
Crayons  
Bottled Water  
Juice packs

### It's never too early

to start planning for Vacation Bible School! We're already in the preliminary stages of getting ready for this summer's VBS. If you have gifts to share we'd love to hear from you. You don't have to be a teacher – you could also be an **A**ctor, **B**uilder, **C**rafter, **D**reamer – and so on, down through the whole alphabet. Please don't wait to be asked – you may have a hidden talent that no one knows about – yet! Please talk to Marilyn Harris, Jan Rybka, Karen Schall or one of the other Study Team members if you have an idea you'd like to share.

### Which do you

**prefer:** cash, checks, debit cards, credit cards, electronic fund transfers (EFT), or on-line banking? Today we have a myriad of choices on how to spend and receive money. At Bethel, contributions are made using

cash, personal checks, and on-line banking. We have been slow to adopt debit, credit, and EFT because of the fees associated with these transactions and because we do not want people to incur debt when giving to the ministries of the church.

We do receive about 10% of our contributions through on-line banking. People set up a recurring payment to Bethel using on-line access to their account. The bank prints and mails the check to Bethel. Some people have the contribution sent automatically and others authorize payment monthly. Special requests are noted in a memo field provided with on-line transactions. Bethel is not charged any extra fees for on-line banking checks.

If you are not a check-book person and you are looking for a more systematic way to financially support the ministries of this congregation, on-line banking might be the way for you. Just ask your local banker what you need to do to get started.

## *The Annual Community Palm Sunday Service*

will be held on  
Sunday, April 1, 2012  
at 2:30 P.M.

at

West Hills Presbyterian Church  
506 West Hills Drive  
Harriman, Tennessee  
Choirs and Ensembles from  
Roane County churches and  
schools are invited to participate.  
Call 865-354-9561 to get your  
selection on the program.

*The public is cordially  
invited to attend.*



### **Free:** Ornamental Grass

Mike McElhinney has two kinds of ornamental grass to give away. Both varieties are tall grass – reaching 5 to 7 feet tall. The “Maiden” variety is a green grass and the “Zebra” variety is variegated green & white. If you are interested obtaining some of this grass for your yard, give Mike a call at 717-8583.

**Do you have** old cell phones or old printer cartridges sitting around your house? Bring them by Will’s office at Bethel to help fund the Ignite/Fusion Student Ministry. We cannot accept mobile and home chargers. Contact Will at the church office for more information.



### **Assisted Living and Nursing Homes**

**Jamestowne**  
**851 Lawnville Road,**  
**Kingston 37763**

Nelle Griffith	Room 206
Dick Hettrick	Room 102
Louise Pickel	Room 209
Mac Robbins	Room 305
Sophie Simon	Room 302

**Wellington Place**  
**1098 Bradford Way,**  
**Kingston 37763**

Jan Parker	Room 107
------------	----------

**Renaissance Terrace**  
**257 Patton Lane,**  
**Harriman 37748**

Marge Maki	Room 108A
------------	-----------

**The Bridge at Rockwood**  
**5580 Roane State Hwy**  
**Rockwood 37854**

Margaret True	Room 349
---------------	----------

**NHC Healthcare Oak Ridge**  
**300 Laboratory Rd**  
**Oak Ridge 37830**

Wanda Carter	Room 212A
--------------	-----------

**Brakebill Nursing Home**  
**5837 Lyons View Pike**  
**Knoxville 37919**

Anne Smith	Room 416-B
------------	------------

### ***In Need of Prayer:***

James & Marlene Woodard, Gil & Julie Barber, Jean & Don Dice, Pat Hale, Helene Ricker, Justus Baird (brother of Barbara Baird), Dianne Swinler (Brenda Strickling’s sister).



### ***March Birthdays***

- 2 Dianne Griffith
- Bina Kirby
- Ginny Warlick
- Jean Young
- 3 Duie Swicegood
- 5 Vic King
- Dan McDowell
- Robert Winsbro
- 8 Charlie Coen
- 9 Kathy Banker
- 11 Margaret True
- 12 Libby Cuneo
- 13 Linda Choate
- Gary Griffith
- 14 Travis Brown
- Shawn Hart
- 16 Wanda Carter
- 17 Hayden Jacks
- Paul Pearman
- 19 Marge Hettrick
- 20 Janet Gasparetti
- 26 Justin Murr
- 27 Greg Murr
- 28 Peggy Sheppard
- 29 Nancy King
- 30 Viviana Vanegas

### ***Memorials***

In memory of Marc Sherrod from:  
G. Wilson Lowery  
Chris R. Lowery  
Mark and Kathy Banker

In memory of Justin Trivette  
from:  
Bill and Jean Plummer

In memory of Betty Nason from:  
Dick Evans and Celie Simon

In memory of Gene and Dot  
Pierce from:  
Jay and Clay Pierce

# igniteFUSION KINGSTON



**March 30-April 2-  
Senior High Retreat**  
(Details will come soon)

## March madness is here!

Everything is super busy as we move through Lent and into Easter. Come join us at Ignite/Fusion Kingston for Ignition on Sunday nights, Word Search on Wednesday and several Spring Break activities. See you soon!

**March 2-4- Senior High Youth Summit. No Ignition**

**March 7-Word Search at the KUMC youth room at 6 PM**

**March 11- We need everyone's help with this great fundraiser!** We will have a fundraising dinner in the Bethel Fellowship Hall after church starting at 12 PM. This will be a buffet style meal but we need everyone's help to clear tables, fill glasses with drinks and assist our "guests". This fundraiser will take the place of our Night of Elegance dinner. You can still wear your black pants, white shirt and tie.  
**6 PM-We will continue our Drugs, Sex and Rock & Roll series with our special guest Deb Hyder who will discuss STD's and have information available from the Roane County Health Department.**

**March 13- Join our Young Adults for an evening of contemporary worship at Take Time worship in the Bethel Sanctuary at 7 PM.** Terrie Winkle from Cokesbury will lead us in worship.

**March 14- Word Search at the KUMC youth room at 6 PM**

**March 18- No Ignition (Have a safe and fun Spring Break)**

**Will you be** staying in town for Spring Break? Join us for several great evening activities!

**March 19- Movie in the Bethel Youth Room at 6 PM**

**March 20- Mini Golf in Knoxville. Cost-TBA**

**March 21- Ice Cream night at 6 PM**

**Senior High Retreat (On Demand) deadline Cost- \$100**

**March 25- Drugs, Sex and Rock & Roll- We will kick off the final part of our series and how we can live out our daily**

**March 28- Word Search at 6 PM in the KUMC youth room.**

**March 30-April 2- Senior High Retreat (Details will come soon)**

## Upcoming Activities

**April 6- Good Friday**

**April 7- Easter Egg Hunt at KUMC 9 AM-11 AM.** We need your help to hide eggs and host an awesome egg hunt this year! (More details coming soon!)

**April 8-Easter!!! Our Savior is risen!**

**April 20-22- Middle School Retreat at John Knox (On Demand)**

*What is your favorite reality show? Is it Pawn Stars, Storage Wars, or American Pickers? We will combine reality tv and the Bible for a great retreat!*

**April 29- Youth Sunday!!!** It is that time of year for you the youth to lead our congregations in worship. (More details coming soon!)

# Transitions Fellowship

**March 13-Take Time Worship in the Bethel Sanctuary at 7 PM.**

**March 17- Leaf raking and clean up day at First Presbyterian Church in Harri-man. Help us reach out to our friends in Harri-man. We will meet at 9 AM and we should be finished by lunch time.**

**March 25- Lunch after church. We will meet at 12 PM and head out to lunch.**

**March 27- Fellowship at 7 PM.**

## Upcoming Events

**April 22- Work day at Clearfield in Clairborne County.**

Contact Will at 376-6340, or by email at [willpuru@comcast.net](mailto:willpuru@comcast.net) for meeting places times and other information about Transitions Fellowship. You can always find the basics at Facebook: Bethel/KUMC young adult ministry.

# March 2012

Sun	Mon	Tue	Wed	Thu	Fri	Sat
<b>Each Week:</b> Bethel Arts Ministry: Mondays, 10-Noon; 6:30-8:30 PM (Adults) Wednesdays 4-6 PM (Youth) Taoist Tai Chi: Tues. 6-7 PM, Sat. 9-10:30 AM Beginning Spanish: Tuesdays 6:30-7:00 PM Advanced Spanish: Tuesdays: 6:30-7:30 PM Choir Practice: Wednesdays 7:00 PM Children's Choir Practice: 8:30 AM Sundays in the KUMC Annex Ignite/Fusion: Sundays and Wednesdays; check page 6 for times				1	2	3  Ladies' Day Out 9:30 AM
4  Communion Sunday Faith Team 12:30	5	6	7  Lenten Study 6 PM	8	9	10  Photo Group 10 AM
11  Ignite/Fusion Fundraising Lunch after Worship	12  Finance Meeting 5:30 PM	13  Transitions: Take Time Worship 7 PM	14  Lenten Study 6 PM	15  Service Team 6:30 PM	16	17  Transitions: Leaf Raking
18  Stated Session Meet- ing 12:30 PM	19	20	21  Property Team 5:30 PM Family & Fellow- ship 5:30 PM Fellowship Sup- per 6:30 PM	22  Trip to Sunset Gap	23	24
25  Study Team 12:30 PM Transitions: Lunch after Church	26	27  Transitions: Evening Fellowship 7 PM	28  Lenten Study 6 PM	29	30	31

***Each Wednesday of Lent*** (minus March 21) we will meet at 6 PM in the Fellowship Hall for a study called "Just Eating: Practicing Our Faith at the Table." Participants may bring a brown-bag supper, and drinks will be provided. A study booklet is available (but not required) for \$3.00 in the church office. First study meets Wednesday, Feb. 29th.