



Bethel Presbyterian Church

203 S. Kentucky Street
Kingston, TN 37763

To Contact Us:

Phone: 865.376.6340

Fax: 865.376.6390

Email: 1bethel@bellsouth.net

Website: www.bethelpcusa.org

The Open Door

Volume 10, No. 10

October 2013

Dear Friends,

We are privileged to host Rev. Butros Zaour, Syrian Christian Pastor on Thursday, Oct 3 at 6:30pm in the Gathering area with hors d'oeuvres before the presentation in the Sanctuary. "Rev. Zaour has been a pastor of the Evangelical Church of Damascus for the past 16 years. He was born in the northern town of Aleppo; graduated from the American College, Aleppo; and obtained his Divinity degree from the Near East School of Theology in Beirut, Lebanon. He has had active leadership roles in the National Evangelical Synod of Syria and Lebanon (NESSL). He will discuss challenges for the Christian church in the midst of violence and war in present-day Syria.

As a visitor to the Presbytery of East Tennessee, Rev. Zaour will be speaking at several Presbyterian churches in the Knoxville, Maryville, Kingston and Chattanooga areas. His visit to several states is sponsored by the denominational Peacemaking Office of the Presbyterian Church (USA) in Louisville, Kentucky.

Since 1984, the denomination's International Peacemakers (IP) Program has sponsored over 200 IP's from 57 countries. These Peacemaker leaders visit with Presbyterians in the U.S. to help us understand peace and justice concerns of other Christians around the world.

With almost 2 million Christians before the current strife in Syria, Syria had the second-largest Christian population in the Middle East, after Egypt. The Christian communities of Syria – until recently about 10 percent of the population – spring from two great traditions: Eastern and Western. Roman Catholicism and Protestantism were introduced by missionary activity that reached its peak in the 19th century. Most missionary work was united in Syria (and Lebanon) under one mission society, comprised of Presbyterians from America, Scotland and Ireland, and Lutherans from Denmark.

The majority of Syrian Christians, however, belong to Eastern communions, which have existed in Syria since the earliest days of Christianity. The main Eastern groups are: Orthodox,

Uniate (Eastern Rite, in communion with Rome), and the independent Assyrian Church. These separate groups, both Eastern and Western, have cooperated increasingly through their ties with the NESSL and the Middle East Council of Churches.

Currently, there are 20 Presbyterian churches in Syria, with approximately 3500 communicants, and 12 Pastors affected by the crisis. NESSL is encouraging Christians to remain in Syria, and not cross into Lebanon, despite all the difficulties and persecution they face. They believe it is imperative that a Christian witness be maintained in Syria, and indeed throughout the Middle East. If Christians leave Syria, they may become unable or unwilling to return. All of the Syrian Presbyterian Pastors have remained with and continue to minister to their congregations." (taken from the PET peacemaking committee press release)

I do hope you all will make plans to be here on Oct 3 to hear Rev. Zaour and that you will invite others to come as well. It is not often that we get such a timely opportunity.

Grace and peace,

Wendy

Inquirer's Class will be held on Sun, Oct 6 and 13 at 9:30 in the Reading Room. Anyone interested in learning more about the Presbyterian Church (USA) and Bethel in particular is invited to come. Anyone interested in joining Bethel is encouraged to come. Rev. Wendy Neff will be leading this two-session class.

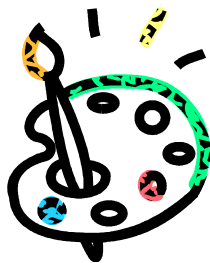


The **Peacemaking Offering** will be received on Sunday, Oct 6. Bethel's portion of the offering will go to support Presbyterian Disaster Assistance efforts in Syria.

Bethel Arts Ministry

Bethel Arts Ministry for kids is starting fall classes this month. 1st-4th graders will meet on Monday, Sept. 30th from 4:00-5:30pm every week through Nov. 11th. Youth grades 5th - 12th will meet on Wednesday, Oct. 2nd from 4:00-6:00pm every week through Nov. 13th. The cost of each class is \$5:00, which covers supplies and a snack.

Both classes will cover painting, drawing, sculpture, and ceramic techniques. Please enter the building on the 2nd floor Church entrance. Please contact Micki Anderson at mickerson@comcast.net with any questions concerning this program.



Don't forget!

Bethel will hold our annual Fall Festival on Saturday, October 12th from 8am-1pm. The festival will be open to the community and will host a silent auction, a youth-sponsored yard sale (done jointly with Kingston United Methodist Church), live music, a marketplace of baked goods & hand crafted items, games & horse rides for kids, book sales, a petting zoo, food from our cafe & fellowship breakfast. The proceeds of the Fall Festival will go toward Mid-East Senior Nutrition Program (Mobile Meals), Michael Dunn, and Roane County Cooperative Ministries. We are in need of items for the Silent Auction, the Marketplace, and volunteers for the bake sale. Your items need to be brought in by 12noon on Friday, Oct. 11th. If you have items for the yard sale and need assistance with delivery, please call the church office. We need everyone to participate to make this our best year ever!!



The Roane County High School Band will be selling **FRUIT FROM FLORIDA** starting until October 9. Delivery of the fruit will



be Wednesday, December 4. The Band is raising money to buy uniforms, maintain those mellaphones, and support game-day operations. Please see Charlie, Corey, Jon, Julie, Lyric, Maria for more details.

Great News!!!

Bell choir is rehearsing and looking forward to performing soon. We still have openings so if you are interested in playing the bells, come join us on Wednesday eve @ 6 pm in the music room.



Tai Chi

There will be a new Tai Chi Beginners Class forming on Tuesday, October 8th. Join us at 6:00 in Fellowship Hall. If you can't come on the 8th but are available on Tuesdays after that, join us in the early weeks. You will easily catch up.

The Taoist Tai Chi Society internal arts and methods incorporate stretching and turning into a sequence of movements that improve the health of body, mind, and spirit. The movements can contribute to: Reduced tension, improved circulation and balance, and increased strength and flexibility. The movements can be adapted to any age, level of fitness, or state of health. It's also a lot of fun!





Generosity Team

Fall is a special season, but aren't they all, each for a particular set of reasons. We historically equate fall with harvest where we reap the fruits of months of hard work. It is not surprising that we celebrate a Thanksgiving at the end of the harvest season. Our church calendar lines up well with this annual cycle, as the Fall is a usual period of commitment. We each corporately and individually examine what we have done as Christians and re-commit ourselves to the ministry and missions of Bethel.

The Generosity Team has continued to meet throughout the year seeking to discern how Bethel can realize its potential for ministry and missions. Last year, we introduced the narrative budget as a way of showing how Bethel uses our offerings and tithes to make a positive difference in peoples lives. We will continue that format this year. For those who LOVE

spreadsheets, they will be available as well. But we hope you study the narrative format because the intent is to use our to make positive changes in this world.

Membership and participation in Bethel is a joy and a privilege. It is a commitment to participate in Christ's mission. Yes, contributing a portion of our monetary treasure is necessary but the full meaning of participating in church involves more. Our Book of Order lists what our involvement should embody, including:

- Proclaiming the good news in word and deed
- Taking part in the common life and worship of the congregation
- Lifting one another up in prayer, mutual concern and active support
- Studying Scripture and issues of Christian faith and life
- Support through giving of money, time and talent

- Demonstrating a new quality of life
- Service to others
- Living responsibly in all aspects of our lives
- Working for world peace, justice, freedom and human fulfillment
- Taking part in the governance of the church
- Regularly reviewing our commitments to the church and considering ways to enhance our participation in Christ's church

October will usher in a Season of Commitment at Bethel. Wendy will be delivering a sermon series entitled "A Liturgy of Abundance." This series will culminate with a Dedication Sunday on November 10. Along with these sermons will be additional articles, Generosity Moments on Sunday, and other information to assist us in prayerfully considering our total commitment to the ministry and missions of Bethel. It will be good! Plan on participating.

Assisted Living and Nursing Homes

Jamestowne / 851 Lawnville Road, Kingston 37763

Nelle Griffith	Room 206
Dick Hettrick	Room 102
Louise Pickel	Room 209
Mac Robbins	Room 305
Sophie Simon	Room 302
Lil Walton	Room 408
George Warlick	Room 313

Wellington Place / 1098 Bradford Way, Kingston 37763

Jack & Sue Muecke	Room 206
Jan Parker	Room 107

Brakebill Nursing Home / 5837 Lyons View Pike Knoxville 37919

Anne Smith	Room 416-B
------------	------------



In Need of Prayer: Nelda Toon, Rev. Bill Shenk, Bill & Marianne Shadden, Anneke Oonk, Molly Cooper, Jean & Don Dice, Jimmy Walker (serving in Afghanistan), Bud Gardner (Lisa Pickel's father), Harold and Martha Underwood (Anita Richmond's parents), Becky Grant (Larry Strickling's niece), Dianne Swinler (Brenda Strickling's sister).

Bethel Equal Exchange Club -



October 2013

The Bethel Equal Exchange Club is a fair trade wholesale buying club originating with Bethel members and friends. The club will be taking order for our standard items of coffee, tea, olive oil and chocolate from October 6 – 13th. Check out the Equal Exchange table Sunday mornings (6th & 13th) or call Carol Brown, 865-376-7171. While the club must order by the case to get the wholesale price, you may order less than a case. If we do not have enough orders to fill a case, the order will not be placed until someone adds to it to complete the case. In addition, you may visit the Equal Exchange website, <http://equalexchange.coop>, and purchase a case of any product you see at the website. Just remember, we buy wholesale and the price you see at the website is retail. All orders must be pre-paid.

These are our standard items:
Coffee: A case of coffee is six bags. Order either whole bean or drip grind.
Organic Breakfast Blend Coffee, a medium & French roast blend, 12 oz. bag for \$6.40 / bag
Organic Love Buzz Coffee, a full city & French roast blend, \$6.40 / bag, drip grind is 10 oz; whole bean is 12 oz.
Organic Decaf Coffee, a full city roast, 12 oz., \$7.40 / bag.
Tea: A case of tea is six boxes.

Each box has 20 tea bags and costs \$2.75.
Organic Green Tea, A satisfying delicate green tea with a social conscience.
Organic English Breakfast Tea, a blend of black teas from Sri Lanka and India.
Organic Extra Virgin Olive Oil: A case is 12 bottles. Each bottle is 500 ml and costs \$10.75
Extra virgin organic oil is robust and peppery with a strong fruit finish, from a non-profit, non-governmental organization in the West Bank. Extra virgin signifies that the olives are cold pressed without any refining.
Chocolate:
Hot Cocoa Mix, 12 oz. of rich chocolate flavor for \$5.00 (case is 6 cans)
Organic Milk Chocolate Peanut Butter Candy Bar- 24 bars for \$24.00
Candy Bars: 3.5 oz. bar; \$2.50 a bar; 12 bars to a case
Organic Dark Chocolate w/ Almonds, 55% Cacao
Organic Panama Extra Dark Chocolate, 80% Cacao
Organic Dark Chocolate with Carmel Crunch and Sea Salt, 55% Cacao
Chocolate Minis – a box of about 150 dark chocolate minis - (55% Cacao)- \$24

Remember, when you buy fair trade items you are using your voice to support safe social and environmental standards in the production of food. Fair trade purchases guarantee a just wage to the small farmer and support a sustainable and diverse food system throughout the world. For more information, watch Equal Exchange YouTube videos.

Volunteers Needed -

Sign up on Kiosk in the Gathering Area

What: Wash and put away all those tiny Communion glasses
When: 1st Sunday of every month.

Where: Kitchen

How: the Hobart dishwasher has special racks that hold these tiny glasses so they do not need to be washed by hand.

Who: Liz Singley will train you on the Procedure.

What: Coffee and cookie set up

When: Every Sunday before church

Where: Gathering Area

How: Make coffee, set out cups, set out cookies

Who: Liz Singley will train you on the Procedure.

Transitions Fellowship

Join us for an awesome time to fellowship, food and grow in Christ together.

October 8-The Heart of Christianity Study & Fellowship in the KUMC Annex at 6 PM.

October 13- Lunch after church. Let's meet in the KUMC parking lot at noon!

October 21-The Heart of Christianity Study & Fellowship in the KUMC Annex at 6 PM.

October 29-Take Time Worship at 7 PM in the KUMC sanctuary.

Upcoming events

November 9- Mission Experience to Clearfork Community Institute in Eagan, TN. More information to come.

The Open Door

5

Bethel - An Earth Care Congregation?

Submitted by Cathy McDowell

At the August 18, 2013 Session Meeting, there was discussion about Bethel becoming an Earth Care Congregation ("Earth Care Congregations" is a program of the Presbyterian Church (USA) Environmental Ministries). Earth Care Congregations are congregations that have committed to the "Earth Care Pledge" and accomplished a specific number of actions toward caring for God's earth in four categories: worship, education, facilities, and outreach. Being an Earth Care Congregation is a piece of how we can live out our Faith. Congregations earning 25 points in each of the four categories can be certified as Earth Care Congregations. There are already over 100 certified Earth Care Congregations across the country. Cathy McDowell volunteered to get this effort going at Bethel. A motion was passed for Cathy to involve others and fill out the Earth Care Audit to see how many things Bethel is already doing. If Bethel chooses to become an Earth Care Congregation, it should be a cross-generational project.

At the September 15, 2013 session meeting, Cathy reported that with the help of many Bethel people the 114 question Earth Care Audit has been completed and that Bethel is already doing many

Earth Care things, so we have enough points for initial certification. Earth Care Churches have to be recertified each year, meaning 50 additional points have to be earned during each succeeding year of recertification.

Two documents have been placed on the Bethel web server: 1) A Guide to Greening Presbyterian Churches; and 2) Earth Care Pledge. You can get the Guide by going to this web address:

<http://ec.bethelpcusa.org/earthcare1.pdf>

You can get the pledge by going to this web address:

<http://ec.bethelpcusa.org/earthcare2.pdf>

For those without a computer, you may contact the church office for a paper copy of the 16 page Guide and/or the one page Earth Care Pledge.

Before the session considers the "Earth Care Congregation" topic any further, they would like to get input from the Bethel congregation. You can express your thought to a session member or there will be additional cross-generational information available in October and November with speakers, discussion times, etc.



Birthdays for October

- 2 Don Pierce
- 3 Chris Badger
Jamie Woodard
- 4 Hannah Sherrod
- 5 Gisela Condon
Eden Sherrod
- 10 Adam Gallaher
- 13 Gary Lemasters
Tom Pickel, Jr.
- 17 Jared McGill
- 19 Andy Holloway
Scott McGill
Jill McMaster
- 20 Eddie Kirby
Caleb Sherrod
- 24 Yvonne Rossi
- 25 Eric Windhausen
- 29 Rebecca Dailey Pierce
James Woodard
- 31 Julie McGill
Roger Richmond

memorials
& gifts

In memory of Jerry Morris from:

Gary and Dianne Griffith

In memory of Marc Sherrod
from:

Mark and Kathy Banker

In memory of Marge Maki from:

Ruth Ann Ludwig

Bob Winsboro

Bill and Betty Ulrich

Tom and Jane Pickel

igniteFUSION KINGSTON

What a great time of year! The leaves are changing colors, football games every weekend, cooler weather...Life is good! Come join us for all of the great activities that are happening at Ignite/Fusion Kingston!

October 6- The Project: 6 PM

Meet in the KUMC Fellowship Hall for dinner and then we will move over to the Bethel Youth Suite for the program.

October 7-11-We will be pricing items every night at 6 PM in the KUMC parsonage.

October 11-High School and Middle School Parents, we need your help at 5 PM to help sort and merchandise items for the yard sale and Fall Festival.

October 12-Youth Yard Sale & Fall Festival!!! We need everyone's help to make this fundraiser a success. The sale will start at 8 AM and run until 2 PM. We will need people to help with final merchandising on Saturday morning, parents to collect money and more. **All funds from the yard sale portion of the Fall Festival will benefit the Ignite/Fusion Kingston ministry.**

October 13- 5 PM-Orchestra at KUMC

No Ignition (Enjoy your Fall Break)

October 14- Lunch with Will! Call me for a ride!

October 16- Bethel Family Dinner at 6:30 PM and movie night in the Bethel Youth Room.

October 20- The always-famous Corn maze, Bonfire, and Beef Stew event! 1 PM-8 PM

We will leave Kingston at 1 PM and head down to Athens, TN to the Mayfield Farm & Nursery. After the maze we will head to the Brown's house for the bonfire and beef stew and s'mores. We will return to KUMC and Bethel at 8 PM. The cost is \$10. Bring extra cash if you want to play any of the games at the maze. Contact Will for scholarship information.

October 21-Breakfast Club/ Midway-Meet at 6:45 AM in the old Waves Café parking lot.

October 22- Breakfast Club/ RCHS! RCHS students join me for breakfast at McDonalds at 7:30 AM. I will have the church van to get you to school after breakfast.

October 27-

5 PM-Orchestra

6 PM-8 PM-Halloween Party-Food, games and more. Wear your favorite costume!

October 29- Take Time Worship in the KUMC sanctuary at 7 PM with Terrie Winkle.

Coming in November

November 10-Buddy's Race for the Cure

November 17- Registration begins for Resurrection 2014



November 28- Turkey Day!!!

The Open Door

7

Our General Fund Giving & Summary of Expenses

Updated 8/31/13

	Actual	Budgeted
Operating Income	\$173,902.61	\$176,210.64
Operating Expenses	<u>\$178,913.38</u>	<u>\$176,210.48</u>
Shortage	-\$5,010.77	

A look at our Mortgage Debt

Updated 8/31/13

Help us stay on track by making your contribution to "Building Fund"

YTD 8/31/13

Gifts, Pledges & Building Use Income	\$66,087.01	
Monthly Payments		<u>Balance</u>
PILP	5,700.87	\$823,393.09
PET Loan	450.00	83,714.24
Other Bldg. Loan	833.30	52,230.19
Expenses	<u>\$55,873.36</u>	
Excess/(Deficit)	<u>\$10,213.65</u>	

The excess goes to our mortgage reserve account to cover any future deficits. Our goal is to have a 6 months reserve.

FYI

• FOR YOUR INFORMATION •



For those of you who don't "do" facebook, here are a few of the photos that were taken at the family picnic at Camp John Knox recently. Looks like a wonderful time was had by all!

Update From Roane County Cooperative Ministries (RCCM)

We are pleased to inform you of exciting progress we are making at RCCM. We have spent the past fourteen months in a collaborative effort with churches, agencies and organizations to develop a plan for alleviating poverty in Roane County. This effort stemmed from concerns for families in cycles of poverty, with weak social support systems and also, a desire to improve cooperation of benevolence efforts across the county.

All of our group's efforts pointed to the need to expand the cooperation and collaboration of churches in a "church support and service delivery network" facilitated by RCCM. This new support role for RCCM provides opportunities for greater participation of individuals and churches. Many exciting efforts are underway including training for individuals and churches; building a clearinghouse of support to solve the problems that are more complicated; and building the support to help individuals stabilize their

situations and develop beyond them.

RCCM will be required to broaden its scope to facilitate this support of churches and service delivery. There will also be additional needs both financially and for volunteers. We ask for your participation as individuals and as members of the church. We expect dramatic changes across the community if we can bring more Christians together to work "as one", much like what Jesus prayed before entering Gethsemane (JN 17).

We look forward to continuing our long standing partnership with you at Bethel Presbyterian! Together we can do a much better job of linking our neighbors with the type of love and support Christ commands us to provide. If you have questions or would like to know about volunteer opportunities, please feel free to contact John Leitnaker directly at 376-5323 or at rccm.john@gmail.com.

Recycling Option

Submitted by Cathy McDowell

I fully support the recycling efforts in Roane County, but there is another recycling option in West Knoxville (Farragut) – directly across Kingston Pike from Costco. There is a traffic light, so it is very easy to enter and exit the recycle area. It is open 24 hours a day, seven days a week.

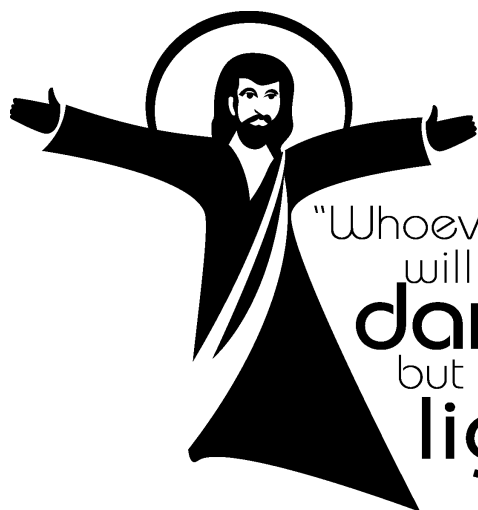
There are recycling options at the West Knoxville location that may not be available in Roane County. The following can be recycled at the Farragut facility:

- glass – any color
- plastic – including styrofoam
- cardboard boxes, broken down
- cardboard food & beverage cartons (like milk, juice, soup) – recycle with cardboard
- round cardboard food containers with a metal rim – recycle with cardboard
- electronics – small
- batteries
- steel, tin, and aluminum – all can go into the metal recycle bin
- mixed paper
- newspaper



The recycling center across Kingston Pike from Costco is one of three recycling centers owned and operated by Fort Loudon Recycling. The main center is in downtown Knoxville, where most of the collected items from all three centers are processed and then sold to companies for use in new products.

I have spoken with the manager at the West Knoxville location and he assured me that they are happy to accept recyclables from individuals in surrounding counties.



"Whoever follows me
will **never** walk in
darkness,
but will have the
light of life."

J O H N 8 : 1 2



EACH WEEK:

Bethel Arts Ministry: Art Club—Adults: Mon. 10-Noon & Mon 6:30-8:30 PM Youth Art grades 1-4 Mon. 4-5:30 PM Teen Art grades 5-12 Wed. 4-6
Taoist Tai Chi: Beginners Tues. 6-7:30 PM, Sat. 9-10:30 AM
Kids Spanish Tues. 5-5:45 Beg. Spanish: Tues. 6-6:45 PM
Advanced Spanish: Tuesdays: 6:30-7:20 PM

		1	2	3 Rev. Butros Zaour, 6:30 PM	4	5
6 Inquirer's Class 9:30 AM Peacemaking Offering	7	8 Beginner Tai Chi class 6 PM	9	10	11	12 Fall Festival
13 Inquirer's Class 9:30 AM	14	15	16 Fellowship Team 5:30 Property Team 5:30 Fellowship Supper 6:30	17	18	19
20 Session 12:15 H.O.M.E. Food Collection	21	22	23	24	25	26
27 Serve Team 12:15 Study Team 12:15	28	29	30	31	EACH WEEK: Bell Choir Practice: Wednesdays 6:00 PM Choir Practice: Wednesdays 7:00 PM Ignite/Fusion: Sundays and Wednesdays; check page 6 for times	