

Bethel Presbyterian Church

203 S. Kentucky Street
Kingston, TN 37763

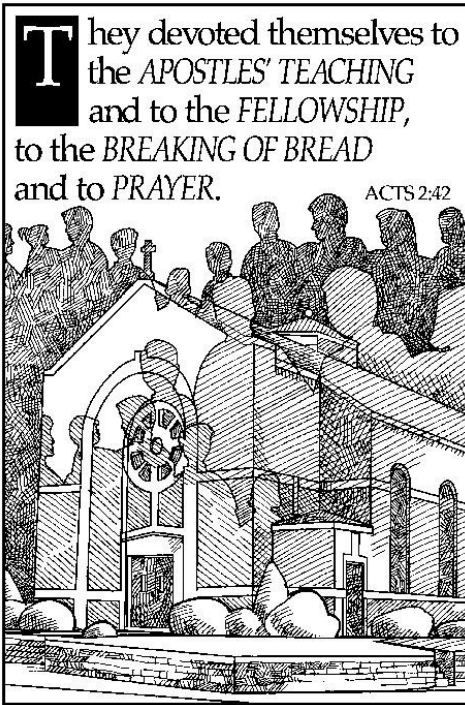
To Contact Us:

Phone: 865.376.6340

Fax: 865.376.6390

Email: 1bethel@bellsouth.net

Website: www.bethelpcusa.org



The Open Door

Volume 13, No. 7

July 2016

Dear Friends,

Half the year is behind us – and what a half it has been. Epiphany, Lent, Easter, Pentecost and now Ordinary Time have filled our Sundays. We have studied and prayed together. We have eaten and celebrated together and we have grieved the loss of many long time members. We have received new members and are saying good bye to others who are moving to new towns and new communities of faith. We celebrated VBS on the lake as we journeyed with Paul and learned about his ministry adventures. It has been a very full and fulfilling half of the year. And now we look forward to the next half of the year with more summer movie nights, continuing opportunities for study and worship, for praying and eating, for laughing and playing together. Christian Education Sunday, the church picnic, World Communion, the International Peacemaker, Hanging of the Greens, Christmas baskets, and Advent all await us in the coming months.

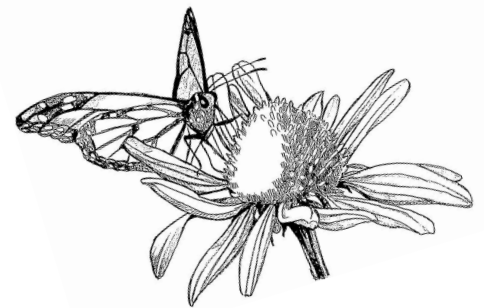
Just as our year has been

and will continue to be filled with good things here at Bethel, so the latest meeting of the General Assembly was filled with good and faithful work done on our behalf. Some of the biggest news out of the Assembly was the election of co-moderators, Revs. Denise Anderson and Jan Edmiston, and the election of Rev. J. Herbert Nelson as the stated clerk. We join our prayers for their leadership in the coming months and years. New things are on the way for the structure of the General Assembly and Presbyterian Mission Agency. We pray the Spirit's guidance on those plans as they unfold. You can learn more about the happenings at GA at www.pcusa.org.

As I have begun to use my phone and iPad more and more for email communication, I have decided to discontinue the use of my Bethel email address and use my Gmail account since it is much easier to use on mobile devices. Please note that my email address going forward is:

wendyneff72@gmail.com.

I hope your summer continues to be filled with rest, play and



enjoyment.

**Grace and Peace,
Wendy**

Photo Group will meet on July 2 at 10 AM — we'll talk about getting the best shots of the upcoming fireworks display.

Summer Movie Night

The next movie night is Friday, July 8. Star Wars the Force Awakens will start at 8:45pm. We will show this movie in the fellowship hall since it is easier viewed inside. Popcorn and water will be provided. Bring your own chair if you want.

Reception for Joan Davis

There will be a reception in the Gathering Area for Joan Davis following church service on July 10. This is Joan's last Sunday to be with us at Bethel. She is moving on July 11 to St. Louis to be near her daughter and son-in-law.

Everyone is welcome. Please join us in saying bye-bye to Joan. She will be greatly missed at Bethel.

Mark the Date: Friday July 22, 7:00 PM

Caleb Sherrod and Friends will host a jazz night in the Bethel fellowship hall to benefit Melanie Sherrod's Tour des Trees bicycle ride for the TREE FUND. Plan to enjoy a night of jazz and light snacks for a donation of your choice to the TREE FUND. (No donation required if you have already given your support). Hope to see you there!

HOME Food Collection

Thank you to everyone who contributed food for our June HOME collection. 54 cans of soup, 14 boxes of crackers, and 14 assorted foods were collected. Thank you for supporting our local food pantry and helping feed hungry folks in our community.

For the month of July our focus foods are **Peanut Butter / Jelly**. These and other non-perishable food items can be brought in throughout the month and placed in the HOME collection basket in the Gathering Area.

Our in-worship collection will be Sunday, July 17th.



PENCIL IT IN

Clay Jar Suppers

Sign up now for our newest fellowship group – Clay Jar Suppers! Participation forms can be found in the gathering area. Pick one up now – our first supper will be in August. **The sign-up deadline for the inaugural event is Sunday, July 17th.**

Return your form to the office or request a form to be e-mailed to you. We look forward to gathering at tables with you! Have questions?

Contact Sherry Paris at northbus@aol.com or call at 354-7695

June Memorials

In memory of the Pierce Family from

D.E. and Kathy Pierce

In memory of the Henley Family from

Anita J. Nerhus

In memory of Teresa Hettrick from

Liz Singley

In memory of Rev. Marc Sherrod from

Mark and Kathy Banker

In memory of Rev. Dick Hettrick from

Mark and Kathy Banker

In memory of Jack Muecke from

Mark and Kathy Banker

In memory of Sue Muecke from Melanie Sherrod

Terry and Charity Robbins

Tom and Jane Pickel

Mark and Kathy Banker

Wilda and Stan Hapke

Charlene and Frank Thomas

Sunny and Nick Cristofaro

Glenna and Tommy Morelock

Assisted Living and Nursing Homes

Wellington Place
1098 Bradford
Way,

Kingston 37763

Chris Badger



Room 107

TN Veterans' Home

1 Veterans Way, Knoxville 37931

Jan Parker

Cornerstone Village-North

2-1 Oak St., Johnson City 37610

Tauno Maki

At Home:

Marianne & Bill Shadden;

Nikki Robbins;

Molly Cooper (Chris Badger's daughter).

Fair Trade Wholesale Club Orders Being Taken

July 1 – July 10



Orders for Equal Exchange products at wholesale prices will be taken from Friday, July 1st through Sunday, July 10th. The order cart will be in the gathering area on the first two Sunday's of the month or you can place your order with Carol Brown by e-mail, carolduckbrown@gmail.com. Payment is due by July 10th and can be dropped off at the office, placed in the offering plate, or given to Carol on the two Sunday order days. Be sure to write "Fair Trade" in the memo field of your check.

We are adding Proud Mama coffee (\$7.00 per can) to our standard item list and removing the organic decaf bagged coffee. We order whatever quantity you want of standard items. You can also order non-standard items by the case. (If we have enough tea orders we'd love to have some standard order teas!) Check out the Equal Exchange website, <http://shop.equalexchange.coop>, for all the products they offer (prices will be retail).

Standard items for the wholesale club are:
Organic Extra Virgin Olive Oil – 500 ml (\$11.95 / bottle)
Coffee -
Love Buzz or Breakfast Blend (\$6.40 / bag) Drip or Whole Bean
Proud Mama (\$7.00 / can) Drip Only
Cafe Salvador - (\$5.90 / bag) Drip Only
K-Cups - Breakfast Blend or Unwind Decaf (\$7/50 / box of 12 cups)
Baking cocoa - 8 oz can (\$5.00 / can)
Semi-Sweet Chocolate Chips – 10 oz bag (\$3.60 / bag)
Dark Chocolate or Milk Chocolate minis – 150 minis (\$30 / box)

You can also pick up items that are currently in stock. We have some Proud Mama coffee, black tea, green tea, a breakfast black tea, backing cocoa, French Roast k-cups, Decaf k-cups, and whole bean French Roast and Love Buzz coffees. The cart is in the office and purchases can be made during regular office hours.

The Equal Exchange Coop supports fair trade for small farmers around the world. Learn more about how your fairly traded purchases make a difference to men and women, fathers and mothers, around the world at <http://equalexchange.coop>.

Hymnals: If you would like to purchase a *Glory To God* hymnal in memory or honor of someone, there is still opportunity to do so. The hymnals cost \$20 each. Note your intention on the memo line of your check.



Birthdays for July

- 1 William Buddy Patton
- 2 Nancy Beth Gerberding
Anneke Oonk
- 5 Paul Wayne Jackson, Jr.
Fern Stackpole
- 6 Ellen Evans Kellogg
Amy Evans Rourke
- 11 Susan Cutts
Bill Martin
Orlando Vanegas, Sr.
- 14 Ryne Knies
- 16 Jan Rybka
- 17 Robinette Garner
Edith Miles
- 19 Wendy Neff
- 20 Darrell Guy
Veronica Kirby Poland
- 21 Dan Hyder
- 22 Jeff Paris
Anne Sides
- 27 Mandy Phillips Knies
- 28 Jonathan Dailey

Mission Trip to the Border

The mission trip has been canceled. The Service Team will reevaluate and make recommendations for a possible trip summer 2017 either to the Border or to Guatemala. If you have leanings for a particular trip/experience please be in conversation with Wendy or members of the Service Team.

June 2016 Session Highlights:

- 1) The monthly Stated Session Meeting was held on Sunday June 12, 2016.
 - 2) Elder McGill did the devotion.
 - 3) Written or oral reports were received from the Session Teams.
 - 4) A written report about the May 17, 2016 Presbytery Meeting was received from Commissioner Karen Schall.
 - 5) Presbytery Training at Faragut – Elder Schall
- Elder Schall attended this May 15, 2016 Congregation Care meeting and gave a report. The group's "mission is to establish and maintain inter-congregational relationships by developing personal contacts and commitments; we come to share Faith and to Support one another in Christian Love."
- The hope is to get enough volunteers to send groups of two to a church to visit. The volunteers make a commitment to visit/attend Worship two or three times a year and the volunteers would also attend one special event; like the church picnic or Hanging of the Greens. This is all meant as a way of strengthening the connectional nature of our church. Elder Schall signed up to be one of the volunteers and would like to invite others to volunteer. Right now, the Committee on Ministry (COM) is still in charge of the Triennial visits.
- 6) Rev. Neff gave an overview of what was to occur when the General Assembly met on June 18-25, 2016.

7) Supper Clubs for Bethel (Clay Jar Suppers) – Sherry Paris is volunteering to organize and coordinate the clubs. This is a way to build fellowship and friendship in small groups. The first supper would be in August. The session passed a motion to accept Sherry's proposal.

8) The next Stated Session Meeting will be on Sunday July 17, 2016 at 12:15 p.m.

9) The session minutes are stored in the church office. These minutes are open for anyone to read or research a topic, but please do this in the church office.

Thank you, Cathy McDowell – Clerk

Environmental Opportunity in Memory of Marc Sherrod

The Stihl Tour des Trees bicycle ride to support the TREE FUND will be October 9-15th making a loop through the Carolinas beginning and ending at Charlotte, NC. I will be riding my bicycle with my sister 560 miles in one week. The TREE FUND (www.treefund.org) supports urban tree research and education and each rider raises \$3,500 to participate. All donations go to the TREE FUND for tree research; the direct expenses of the TOUR are covered by sponsors such as Stihl Chain Saw Company and others.

I will ride this year in memory of Marc. (For those of you who are new to Bethel, Marc Sherrod was the pastor from 2001 until his death in 2009 from thyroid cancer). The tour will actually go through Sanford, NC where he spent his teenage

years growing up. My tree family will plant a tree at the Sanford library in memory of Marc. This venue was chosen because Marc always had a book in his hand. This will be a very special occasion for me personally and for my family. You are invited to Sanford, NC on October 12th to be a part of this dedication and to meet my tree family. Although I started riding the tours after Marc died, I know he would have been my greatest supporter of this endeavor.

I would not be able to meet my fund raising goals without all the generous donations from Bethel Presbyterians! I am so appreciative and think about you many times as I am pedaling up a steep hill and wondering WHY DO I DO THIS? I am a firm believer that God trusted us with the care of his creation and this is one way we can make a difference. Donations may be mailed to: TREE Fund, 552 S. Washington Street, Suite 109, Naperville, IL 60540. Note on the check it is for "Melanie Sherrod STDT2016". Or give the check to me and I will gladly mail it. You can also donate online: <https://www.crowdrise.com/STDTteamsouthernchapter2016/fundraiser/melaniesherrod>

Thank you very much.

JULY

Sun	Mon	Tue	Wed	Thu	Fri	Sat
					1	2 Photo Group 10 AM
3 Communion Sunday Faith Team 12:15	4	5	6	7 Ten 10 Book Group 10 AM	8 Movie Night 8:45 PM	9
10 Reception for Joan Davis	11 Finance Team 6 PM	12	13	14	15	16
17 Hands of Mercy Food Offering Session 12:15	18	19 Cumberland County Play- house	20 Property Team 5:30 Fellowship Team 5:30 Fellowship Supper 6:30	21	22 Jazz Night at Bethel 7 PM	23
24 Study Team 12:15 Serve Team 12:15	25 Generosity Team 7 PM	26	27	28	29	30
31 Prison Ministry at MCCX 6:30 PM	Weekly Events: Bethel Arts Ministry: Art Club—Adults: Mon. 10-Noon & Mon 6:30-8:30 PM Taoist Tai Chi: Tues. 6-7:30 PM, Fri. 10-11:30 AM, Sat. 9-10:30 AM Yoga: Thursday at 5:30					

Please Remember: Many of the committees and activities, the bell choir and regular choir are on summer schedules right now. Please check with your fellow committee members to be sure you are meeting this month.